

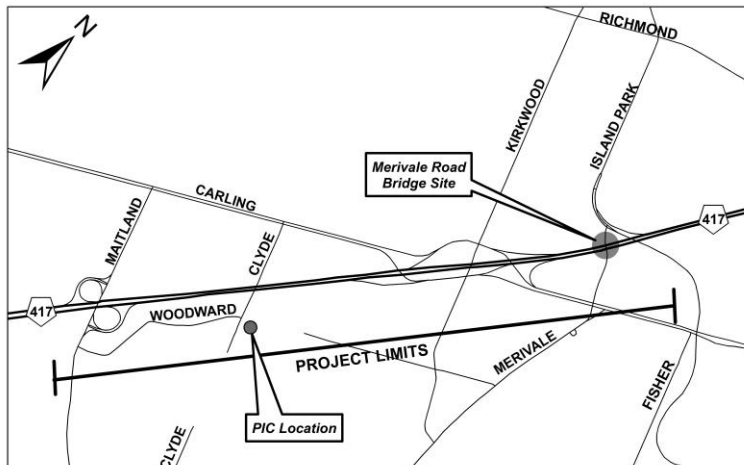
NOTICE OF PUBLIC INFORMATION CENTRE
HIGHWAY 417 REHABILITATION AND WIDENING FROM WEST OF MAITLAND AVENUE TO
EAST OF ISLAND PARK DRIVE, CONTRACT NO. 5 (G.W.P. 4058-01-00), DETAIL DESIGN

THE STUDY

The Ontario Ministry of Transportation (MTO) has retained MMM Group Limited to undertake the detail design for the widening of Highway 417 and the rehabilitation of bridges located along the highway from west of Maitland Avenue to east of Island Park Drive. This project has been divided into five separate contracts. Four contracts have been completed using rapid replacement technology, including the structure rehabilitation and deck replacement of the Island Park Drive bridges (Contract No. 1 completed in 2007), Clyde Avenue bridges (Contract No. 2 completed in 2008), Carling Avenue eastbound bridges (Contract No. 3 completed in 2011), and Kirkwood Avenue and Carling Avenue westbound bridges (Contract No. 4 completed in 2013).

Contract No. 5 is the focus of this notice and includes the following components:

- Widening of Highway 417 to four lanes in each direction between Maitland Avenue and Carling Avenue;
- Rehabilitation of the Merivale Road bridges and widening of the south bridge;
- Replacement of all existing noise barriers within the project limits, including east of Maitland Avenue (north side of highway) and east of Merivale Road (south side of highway);
- Construction of related works including retaining walls, replacement and upgrades to drainage, roadside protection, illumination, highway signage, Advanced Traffic Management System (ATMS), and landscaping improvements;
- Relocation of utilities impacted by the highway widening; and
- Traffic management, in conjunction with the City of Ottawa, for construction staging. Anticipated traffic impacts include: Highway 417 lane reductions during off-peak periods; short-term ramp closures at the Maitland Avenue and Carling Avenue interchanges; long-term closure of the Carling Avenue Westbound to Highway 417 Eastbound on-ramp; and weekend closures of Merivale Road between Carling Avenue and Island Park Drive.



PUBLIC CONSULTATION

A Public Information Centre (PIC) has been arranged to provide agencies, interest groups, local residents and business representatives, and members of the general public with an opportunity to review and comment on the proposed works, the proposed traffic management plan, and the anticipated environmental effects and proposed mitigation. Members of the Project Team will be available at the PIC to discuss the project with you and answer any questions you may have.

Date:	Tuesday, August 11, 2015
Place:	J.A. Dulude Arena, Mel Baker Hall 941 Clyde Avenue (south of Highway 417 at Woodward Drive) Ottawa, Ontario
Time:	4:00 p.m. to 8:00 p.m.

THE PROCESS

This project is being carried out in accordance with the approved environmental planning process for Group 'B' projects under the MTO's *Class Environmental Assessment (Class EA) for Provincial Transportation Facilities* (2000), with opportunity for public input throughout the project. The preliminary designs for the bridge rehabilitation and for the widening of Highway 417 were documented in Transportation Environmental Study Reports (TESRs), which received environmental clearance in 2005 and 2008, respectively. Upon completion of the detail design, a Design and Construction Report (DCR) will be prepared and filed for a 30-day public review period. A newspaper notice will be published at that time to explain the review process and identify the locations where the DCR can be reviewed.

We are interested in hearing any comments that you may have regarding this study. If you are unable to attend the PIC and wish to obtain further information or to provide comments, please contact either the Consultant Project Manager or MTO Senior Project Engineer listed below. You can also visit the project website for more information at www.queenswayexpansioneast.com.

Mr. Lincoln MacDonald, P.Eng.
Consultant Project Manager
MMM Group Limited
1145 Hunt Club Road
Suite 300
Ottawa, ON K1V 0Y3
Phone: 1-877-998-9912 (toll free)
(613) 736-7200
Fax: (613) 736-8710
E-mail: MacDonaldL@mmm.ca

Ms. Kate Green, P.Eng.
Senior Project Engineer
Ministry of Transportation - Eastern Region
1355 John Counter Boulevard
Postal Bag 4000
Kingston, ON K7L 5A3
Phone: 1-800-267-0295 (toll free)
(613) 540-5120
Fax: (613) 540-5106
E-mail: Kate.Green1@ontario.ca

If you have any accessibility requirements in order to participate in this study, please contact one of the Project Team members listed above.

Information will be collected in accordance with the *Freedom of Information and Protection of Privacy Act*. With the exception of personal information, all comments will be part of the public record.

Des renseignements sont disponibles en français en composant le (613) 736-7200 poste 3287, auprès de M. Michel Bisson, P.Eng., Courriel: BissonM@mmm.ca.

