



Near West Accommodation Review

Notice of Board Decision

The Ottawa-Carleton District School Board, at its meeting of January 28, 2014 approved the following motions in regard to the Near West Accommodation Review.

Moved by Trustee McKenzie, seconded by Trustee Seward, that:

- A. A new Junior Kindergarten to grade six Early French Immersion program be established at Connaught Public School commencing with a Junior Kindergarten to grade four offering in September 2014 and advancing one grade per year until the program is completely phased in;
- B. Elmdale Public School's Junior Kindergarten to grade six English/Core French program be redirected in block fashion to Cambridge Street Public School, Connaught Public School and Hilson Avenue Public School as detailed in Appendix E of Report 13-165;
- C. Board approve the revised attendance boundaries for Cambridge Street Public School, Connaught Public School, Hilson Avenue Public School, Elmdale Public School and Devonshire Community Public School as detailed in Appendix E of Report 13-165 with the following provisions:
 - New students in the revised Cambridge English/Core French boundary area east of the O-Train tracks and north of Somerset Street be directed to Cambridge Street Public School beginning in September 2014. Current students residing in this area may remain at Connaught Public School;
 - Elmdale Early French Immersion students who live the area between Holland Avenue and Hamilton Avenue (including any JK siblings for the 2014/15 school year) may remain at Elmdale Public School or move to Connaught Public School. All new students in this area are directed to Connaught Public School;
 - Elmdale English/Core French students who will be attending grade 3 in September 2014 and who plan to enroll in Middle French Immersion for September 2015 be permitted to attend their designated Middle French Immersion school (Hilson Avenue Public School or Mutchmor Public School) for grade 3 English/Core French;

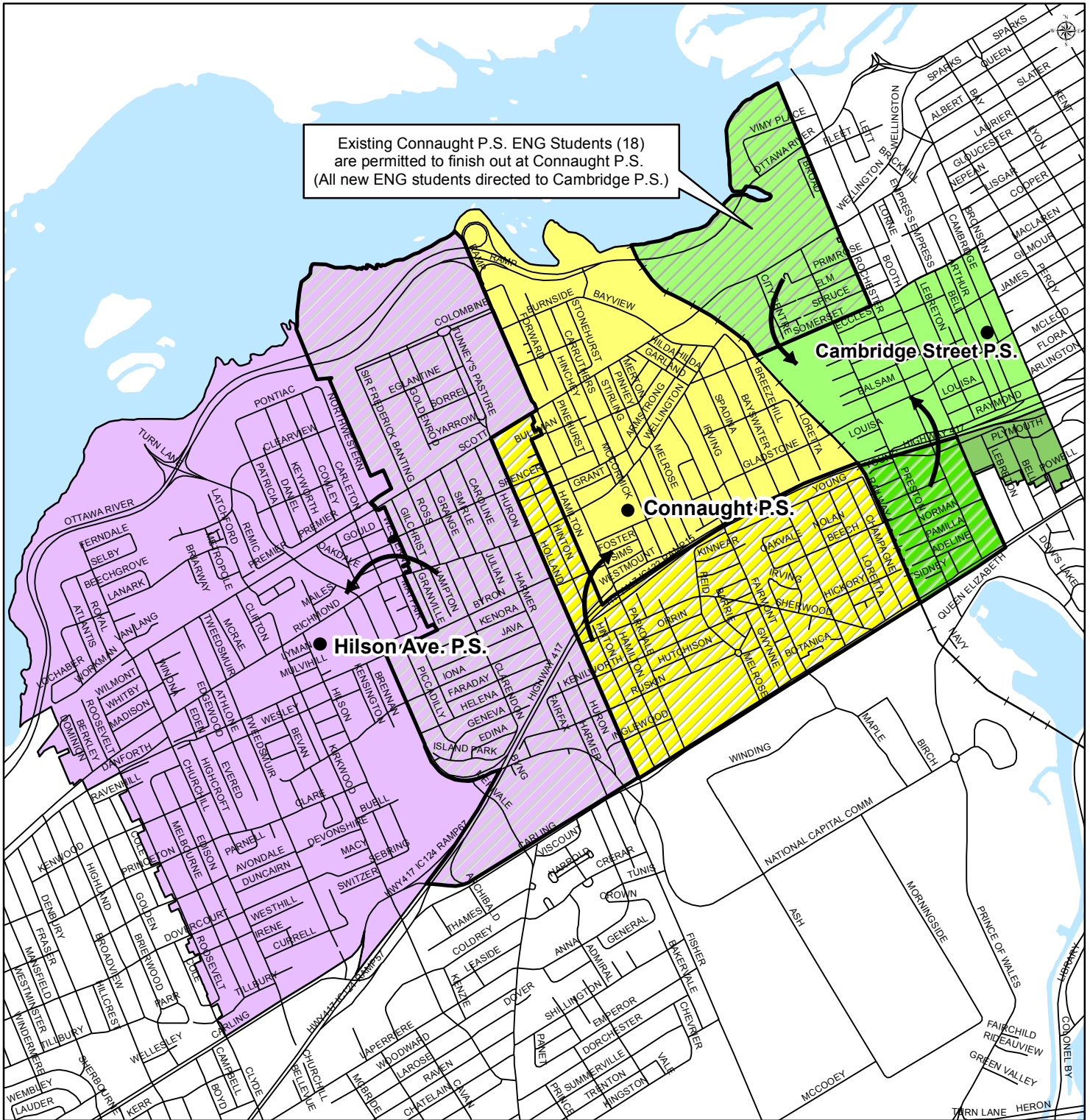
- D. A Transition Team (or Teams) made up of the Superintendent of Instruction, the principal, teachers, students and school council chairs (or their designates) of the affected school(s) be formed to guide the implementation of the Near West accommodation review recommendation in each school, including consideration of:
- The needs of special needs and vulnerable students;
 - Overseeing communication with parents on school, busing and other issues;
 - A social event during the summer or at the beginning of September 2014;
 - A buddy system;
 - Common classes for English/Core French and Early French Immersion students (e.g., Math and English together in grade 4 and above);
- E. A start-up budget of at least \$50,000 be provided to Connaught Public School to cover the full cost of outfitting all Kindergarten to grade six classrooms, including but not limited to:
- Necessary classroom materials and resources;
 - French materials for the library;
 - Technological resources to serve the needs of the English/Core French and Early French Immersion programs;
 - Upgrades to other common areas as required;
- F. Elmdale Public School and Connaught Public School be retrofitted over the summer such that the additional classroom space is in place and ready for student learning by September 2014;
- G. Staff investigate the possibility that Full-Day Kindergarten Capital funding be combined with School Condition Improvement grants in order to build an addition to Elmdale Public School to accommodate both Full-Day Kindergarten and reduce portable use on the school yard and report to the Board with the next Capital Plan;
- H. Staff be directed to take immediate steps to reserve as large a land site as possible (up to 7 acres) for a future school in the West Wellington/ Hintonburg/ Dalhousie/ Centretown catchment areas (e.g., the Bayview/O-Train lands area, Tunney's Pasture); and
- I. The accommodation review process be updated in time for the next accommodation review to include:
- The preparation of a guide for accommodation review working groups to assist them in establishing their process and to explain the roles of working groups, Board staff, the local Trustee, the Board, and others;
 - The offer of professional facilitation to accommodation review working groups at the outset, particularly to assist them in establishing their approach and processes, and in arriving at decisions on options;
 - Clear parameters for assessing school capacity for purposes of accommodation reviews including an initial period of fact clarification and establishment of the process, staff led school tours and/or presentations to assist their members in becoming acquainted with each school and establishment of the number of classrooms available in each school including the assumptions used in arriving at that determination; and
 - The provision of any limitations to the scope of a review (e.g., whether certain programs cannot be considered for relocation).

-Carried.



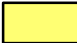





Approved for Implementation September 2014

Relocate Elmdale P.S. JK-6 ENG Program to Cambridge Street P.S., Connaught P.S. and Hilson Ave P.S.
 Redirect Connaught P.S. (Portion) to Cambridge Street P.S.

English Attendance Boundary

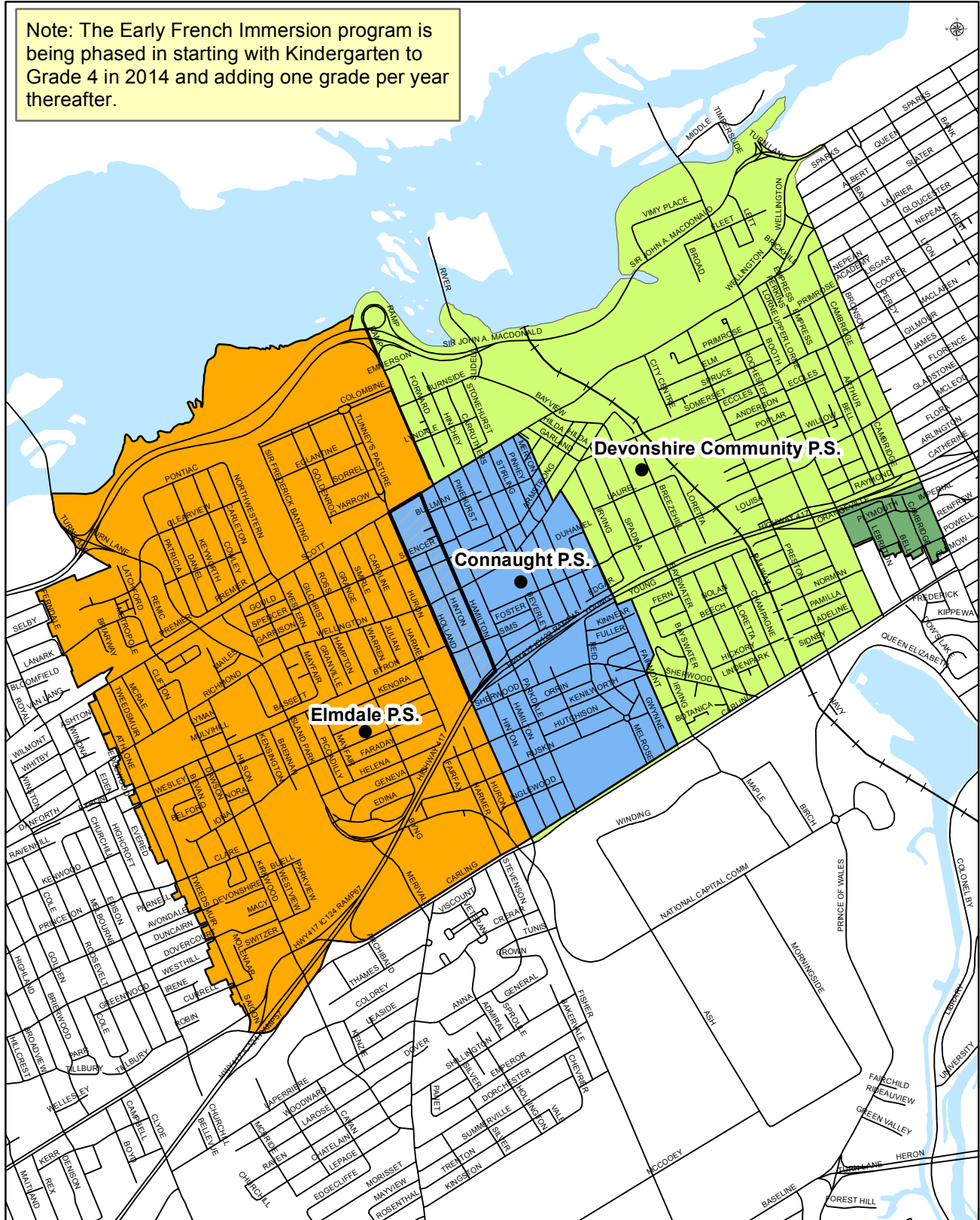


Legend

- | | | | |
|--|---|---|---|
|  | Hilson Ave P.S. JK-6 ENG |  | Redirected Elmdale P.S. JK-6 ENG to Hilson Ave P.S. |
|  | Connaught P.S. JK-6 ENG |  | Redirected Elmdale P.S. JK-6 ENG to Connaught P.S. |
|  | Cambridge Street P.S. JK-6 ENG |  | Redirected Connaught P.S. JK-6 ENG to Cambridge Street P.S. |
|  | Option to attend Cambridge Street P.S. or Mutchmor P.S./First Ave P.S. (2014) |  | Redirected Elmdale P.S. JK-6 ENG to Cambridge Street P.S. |

Approved for Implementation September 2014 New JK to Grade 6 EFI Program at Connaught P.S.

Note: The Early French Immersion program is being phased in starting with Kindergarten to Grade 4 in 2014 and adding one grade per year thereafter.



Legend

- Elmdale P.S. JK-6 EFI
- Devonshire P.S. JK-6 EFI
- Connaught P.S. JK-6 EFI
- Option to attend Devonshire P.S. or First Ave P.S./Mutchmor P.S. (2014)
- Existing Elmdale P.S. EFI Students (13) are permitted to finish out at Elmdale P.S.
(All new EFI students directed to Connaught P.S.)